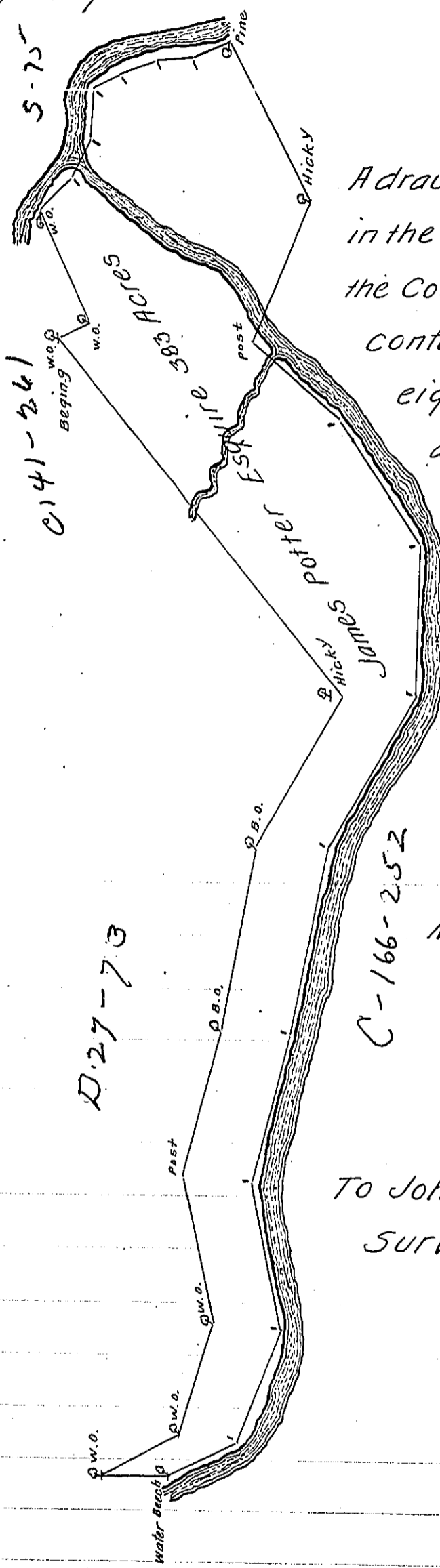


FORM No. 1.

Courses and Distances from the place of Beginning.

- S 25° E 20
- N 65 E 78
- S 50 E 30
- S 64 E 24
- East 30
- S 28 E 20
- S 20 E 22
- S 9° E 21
- S 22 E 26
- S 60 W 110
- N 70 W 95
- S 40 W 72
- S 55 W 94
- West 94
- N 62 W 110
- N 81 W 120
- N 79 W 96
- S 77 W 94
- N 74 W 72
- N 29 W 54
- North 40
- S 29 E 54
- S 74 E 72
- N 77 E 94
- S 79 E 96
- S 81 E 120
- S 62 E 110
- N 49 E 290



A draught of a Tract of Land situate in the second forks of Sinemahonem in the County of Northumberland containing three hundred and eighty three Acres and allowance of six Acres per cent.

Surveyed the — Day of August 1785 for General James Potter in pursuance of a Warrant for 500 Acres (being part of a Pre-emption of 1000 Acres reserved for him by law) bearing date at Philad<sup>a</sup> the 4<sup>th</sup> day of May Anno Domini 1785.

Richard Sherer D.S.

To John Lukens Esq<sup>r</sup> }  
Surveyor General }

IN TESTIMONY that the above is a copy of the original remaining on file in the Department of Internal Affairs of Pennsylvania, made conformably to an Act of Assembly approved the 16th day of February, 1833, I have hereunto set my Hand and caused the Seal of said Department to be affixed at Harrisburg, this nineteenth day of October 1910.

*Henry Houck*  
Secretary of Internal Affairs.